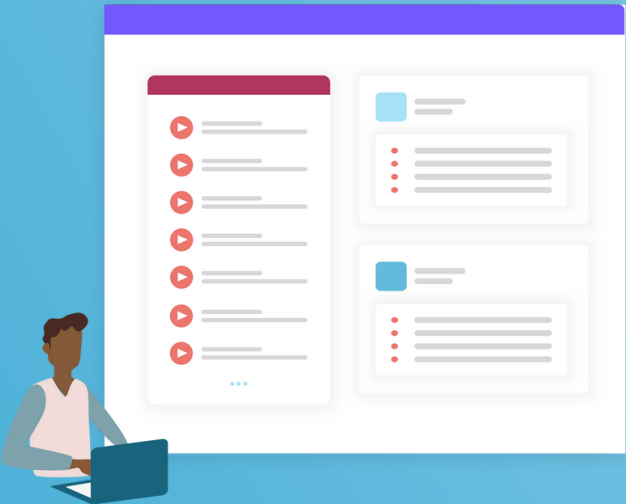


# Scoir Guide

---

## Getting Started as a Parent/Guardian



# Table of Contents

---

- What is Scoir 3
- Creating Your Account 4
- Your Student's Account 5
- Your Student's Document Requests 6
- Searching for and Suggesting Colleges to Your Student 7
- Financial Information & Estimates 9
- Messaging and Surveys 11

# What is Scoir

Scoir is a solution for students, supporters, counselors, and colleges focused on finding the right fit through a unified college search and planning network. Our platform connects students to a powerful set of tools to help them identify their talents, search for their college fit, plan with their supporters, and apply when ready.

As a parent/guardian, you play an integral role on Scoir by providing your student(s) with college suggestions, financial information, and general guidance. Here is our [Parent/Guardian Overview video](#).

Watch [this short video](#) to see how Scoir works.



# Your Account

---

As a safe, secure, student-centric college search platform, your child or high school must first invite you to connect with them on Scoir. Parents/guardians cannot sign up for Scoir independently.

## **Joining via student invite**

If you've been invited to join Scoir by your student and do not currently have an account, follow the link in the invite email you've received to get started.

## **Joining via a high school invite**

If you've been invited to join Scoir by your student's high school and do not currently have a parent/guardian account, follow the link in the invite email you've received to get started.

## **How to Link to Your School**

If you already have a parent/guardian account and wish to link to your new student, make sure your student has added you to their profile and has sent you an invite. Then, sign-in to your parent/guardian account and click Accept to link with the student presented on the Get Started page.

When you're finished, click Continue.

# Your Student's Account

## Viewing Your Student's Profile

Your Student's Profile hosts all of their personal information on Scoir including personal details, academic information, and test scores, activities and achievements, college preferences, and their student drive.

Please note that the parent/guardian view of the Student Profile is read-only and cannot be edited. If you spot any inaccuracies or would like to update your student's information, please notify the student or their counselor.

The screenshot displays the Scoir interface for a student profile. The top navigation bar includes the Scoir logo, 'College Search', and 'My Students' (selected). The profile is for 'Elena Nya Polin 'Nya''. The 'Personal Details' section includes contact information, parents (Mrs. Hossley), and application IDs. The 'Academic Overview' section shows the student is currently at Polin Academy and lists ACT and SAT test scores.

ACT		SAT	
Superscore	Highest	Superscore	Highest
31	31	1370	1360

## Viewing Your Student's College List

Your Student's College List can be displayed by clicking on the My Student tab at the top of the page, then on Colleges & Applications.

# Assisting with Your Student's Document Requests

---

## Viewing Your Student's Document Storage

Scoir offers a comprehensive document storage solution for students with support for common file types and external links. Parents/guardians have the ability to view and add items to their student's drive.

## Your Student's Early Decision Contract

Early decision (ED) is a binding agreement, where the student indicates to the college that upon acceptance they will attend that school. This is a good choice if they know the school is the number one choice. However, students may only apply to one school using this process. Because it is a binding agreement, the institution requires signatures from the student, the family, and a school counselor.

## Responding to an ED contract request email from Scoir

Once your student indicates that they are planning to apply to a school ED you will receive an email inviting you to complete the parent/guardian side of the ED contract.

1. Click Review and Sign in the Email
2. Click the checkbox to agree to the ED contract and choose Sign

## Responding to an ED contract request within Scoir

Upon login you will be prompted to complete the ED contract

1. Click Get Started to begin the signing process
2. Check the box to consent and then choose sign to add your digital signature
3. A timestamp will indicate the time the signature was added

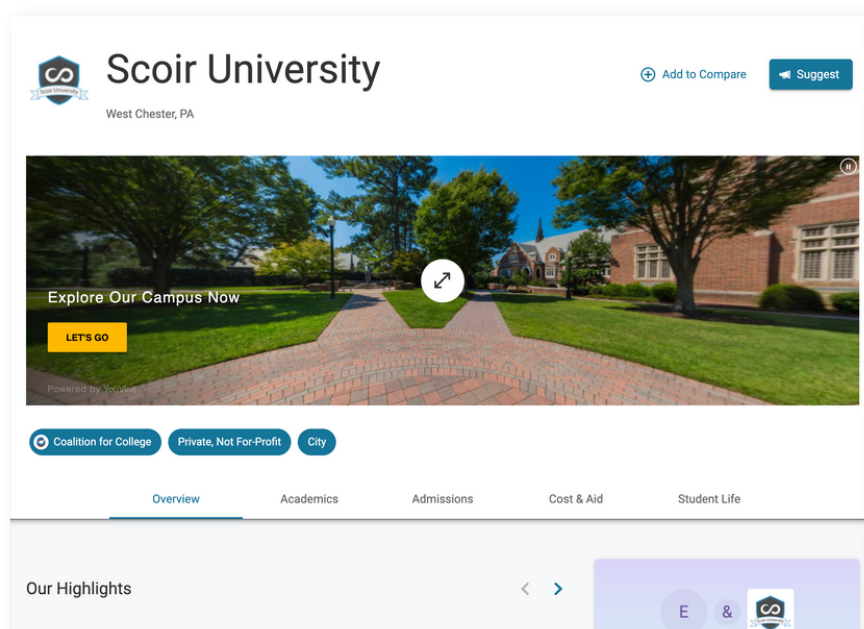
You don't need to sign it immediately, but it will need to be signed before the application documents are submitted. To skip signing the document, choose Skip instead of Sign.

# Searching for and Suggesting Colleges to Your Student

Scoir's College Search feature allows you to search for colleges within the context of your student. By default, College Search results will be filtered by your student's preferences, to help you quickly gain insight into your student's interests and mindset on their college journey.

## College Profiles

A college's profile contains all of the information available for a college on Scoir, and is broken into five main sections: Overview, Academics, Admissions, Cost & Aid, and Student Life. Virtual tours powered by YouVisit are also displayed at the top of the page (where available).



# Searching for and Suggesting Colleges to Your Student

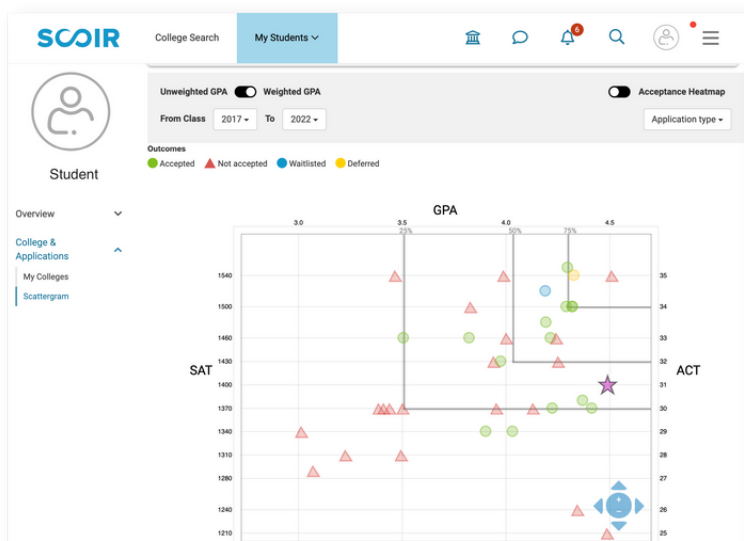
## Scattergrams

Scattergrams are only available if your student is linked to a high school using Scoir. A student will only be plotted as a data point on the scattergram if they have a GPA and an ACT or SAT score in their profile. This may affect students without test scores who apply completely test-optional.

To view scattergrams, follow these steps.

1. View your student's profile by clicking on the My Students tab at the top and choosing your student from the list that appears.
2. Go to the Colleges and Applications option on the left side and select Scattergram.

On the Scattergram page, you will be able to toggle between scattergrams for any college you have suggested to your student, as well as any college your student is Following, Applying to, or has Applied to. A purple star will indicate your student's position on the scattergram in relation to historical admission data from the student's school.





# Searching for and Suggesting Colleges to Your Student

## Suggesting Colleges to Your Student

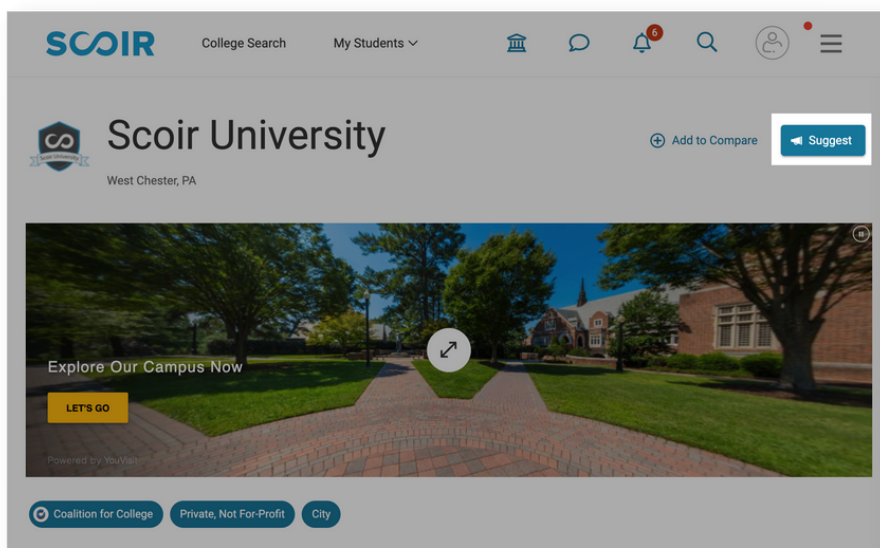
To suggest a college to a student, follow these steps.

1. First, click on the College Search tab.
2. Click on Advanced Search on the left hand side of the page.
3. Search for colleges via the college search tools available on the College Search page.
4. Click the Suggest button on the college tile of the college you would like to suggest.

Additionally, if you click on your desired school name, you will come to that school's college profile.

To suggest the school to your student, click the Suggest button at the top of the college profile.

Once a college is suggested, the student may act on it from the Suggested column of their My Colleges page. The status of suggested colleges is visible to parents/guardians on the Suggested view within the context of the student.



# Financial Information and Estimates

---

Calculating the cost of college can be confusing. Scoir provides multiple levels of financial estimates based on the information you provide. Rest assured that your information is secure and only visible to you.

There are three levels of financial estimates provided by Scoir. The more information you provide, the more accurate your financial estimates will be.

## **Average Net Price**

Average net price is the default estimate and is the average reported price for all enrolled students.

## **Income-based Net Price**

The income-based net price is calculated based on your household income range. To select a household income range, click the Household Income link beneath the Income-based Net Price section, then select the range that applies to your household. When you're finished, click Save. College tiles will be updated to reflect Household Income Range price estimates. You can update your Household Income Range at any time by clicking the Edit link beneath the Income-based Net Price section.

# Financial Information and Estimates

## Custom Price Estimate

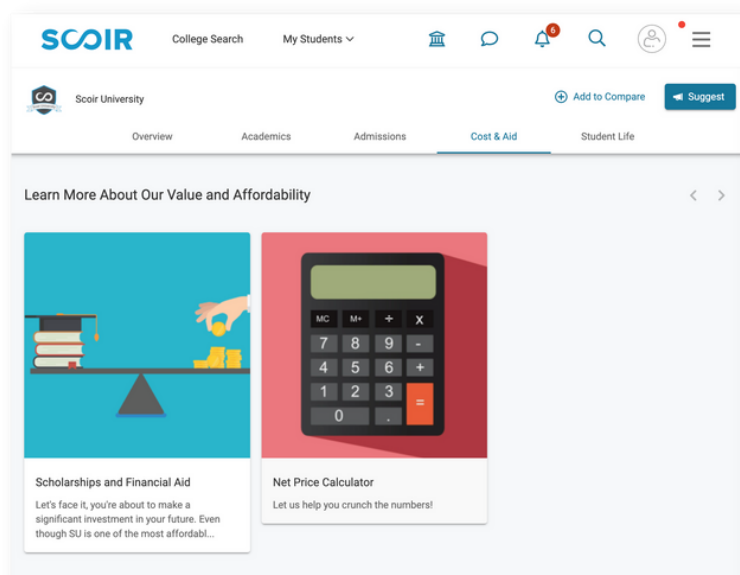
Scoir uses a proprietary algorithm for assessing the Custom Price Estimate per college. To receive a custom price estimate, click the Calculate your EFC button beneath the Custom Price Estimate section.

You'll be prompted to enter information about your family, income, and assets. The more information you provide, the more accurate your EFC will be.

When you're finished entering your information, click Calculate. You will be presented with a Custom Price Estimate. To confirm, click Finish.

College tiles will be updated to reflect Custom Price Estimates based on your EFC.

You can update your EFC information by clicking the Edit your EFC button beneath the Custom Price Estimate section.



# Messaging and Surveys

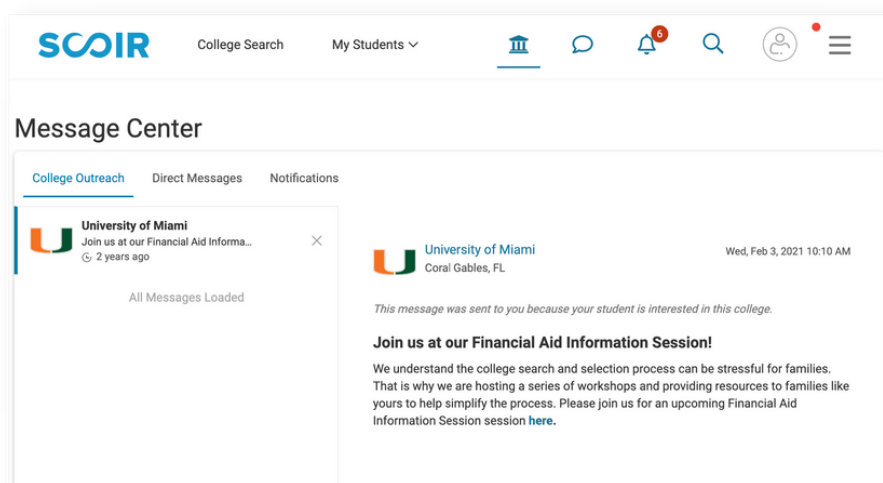
## Message Center

To see any messages sent to you by either your student or their counselor, click the bell icon in the top right menu upon logging into Scoir.

There, you'll find College Outreach, which is where you'll see any messages from colleges your student is interested in. For example, if a college your student is interested in is hosting a Financial Aid Information Session, they may send a message encouraging you to sign up.

The next section within the Message Center is Direct Messages. This is where you can exchange communications with your student and/or their counselor. To write a message, you can click the Compose button to write your message, and click Send.

The third and final section of the Message Center is Notifications— this is where any Early Decision contract reminders, standardized test reminders, and other notifications will be held.



# Messaging and Surveys

---

## Surveys

Within Scoir, your student's school or counselor may assign you a survey regarding your student. If you do have a survey, you will be notified both via email and within the Notifications tab in Scoir. To find these surveys, log into Scoir and click on the menu in the top right corner. Then, under your name, among other options, click Surveys.

Then, you can click on any survey you have not yet started. By filling out the survey and clicking Submit, your responses will be sent to your students' counseling team.

